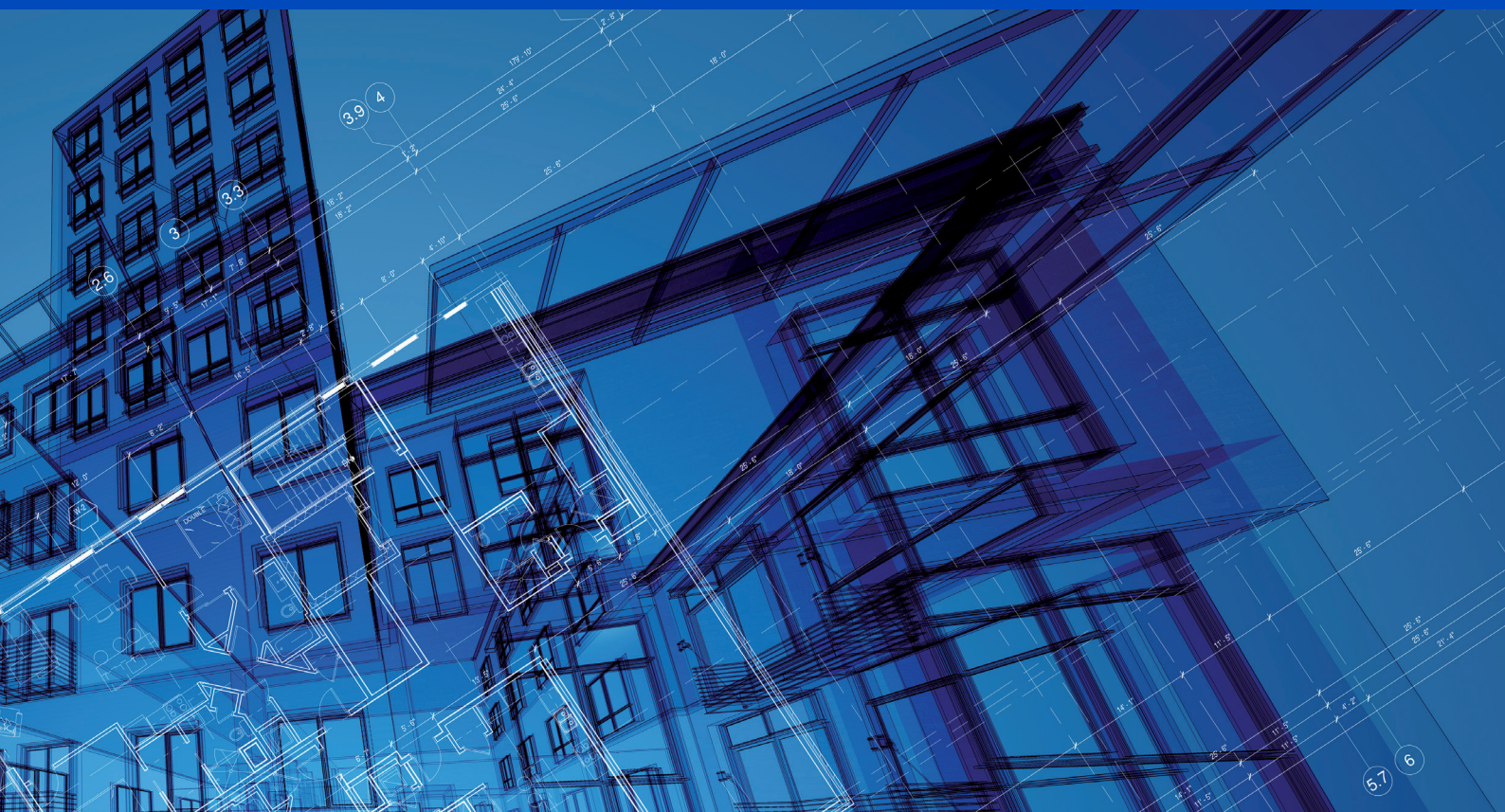


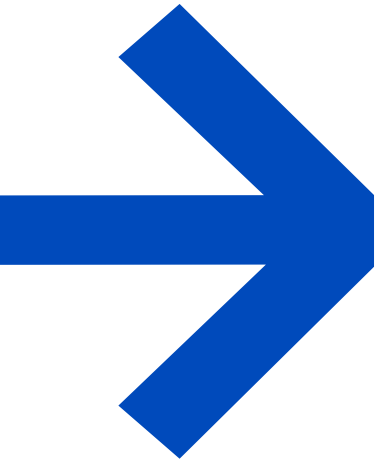


EFAPEL[®]

BIM TOOLS



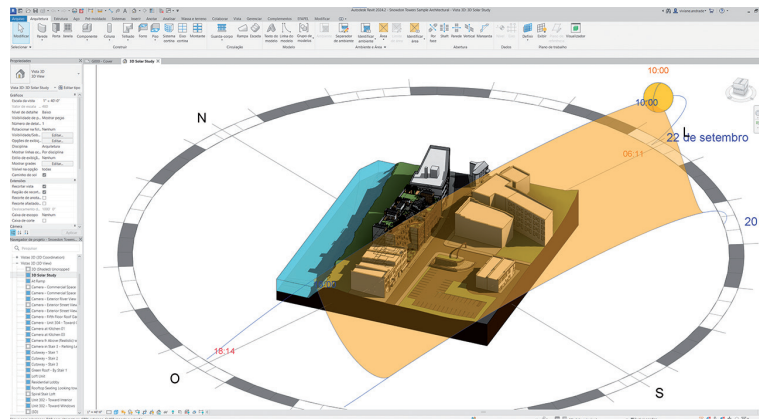
For a digital
new future



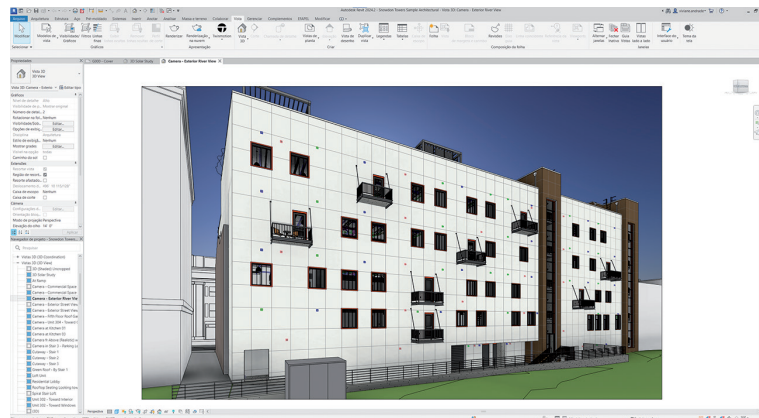
What is BIM (Building Information Modeling)?

BIM is a digital methodology that facilitates collaboration between architects, engineers, contractors, and designers by centralising all project information in a 3D model. This approach allows for more accurate visualisation, quantification, and documentation of buildings, avoiding errors and budget overruns.

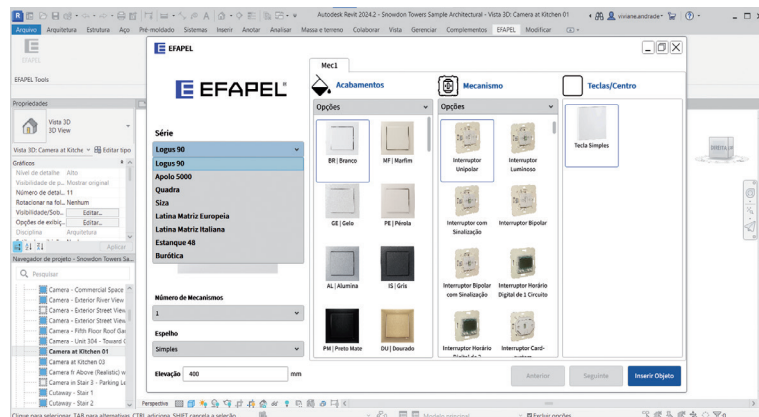
With BIM, the management of time (BIM 4D), costs (BIM 5D), and building lifecycle (BIM 6D) is optimised, ensuring greater efficiency and sustainability throughout the construction process.



Add-in EFAPEL in REVIT.

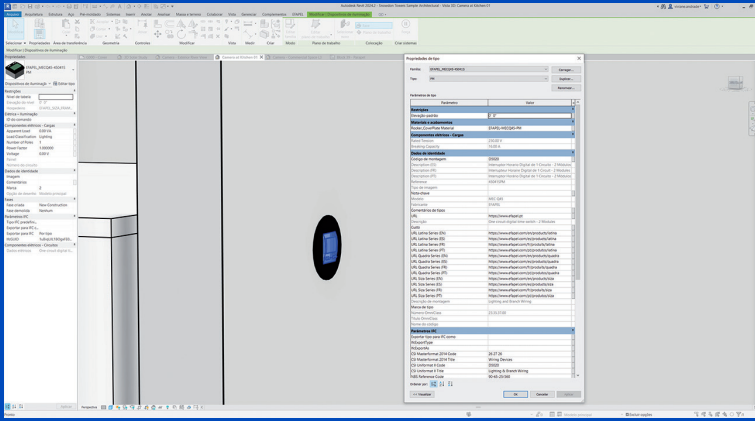


Interface with 3D parametric models.



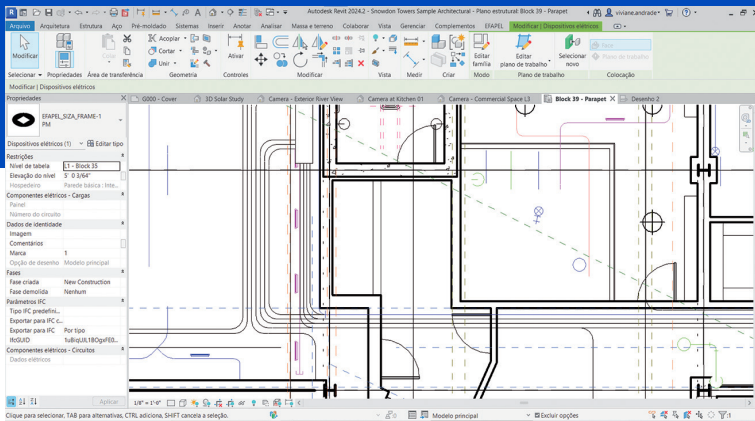
Selection of EFAPEL series, choice of mechanisms and finishes.

Building Information Modelling



Real-time 3D visualisation of the selected devices and their specifications.

For a digital new future



2D visualisation of applied functions.

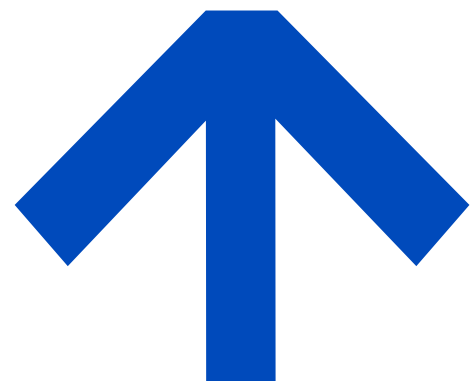
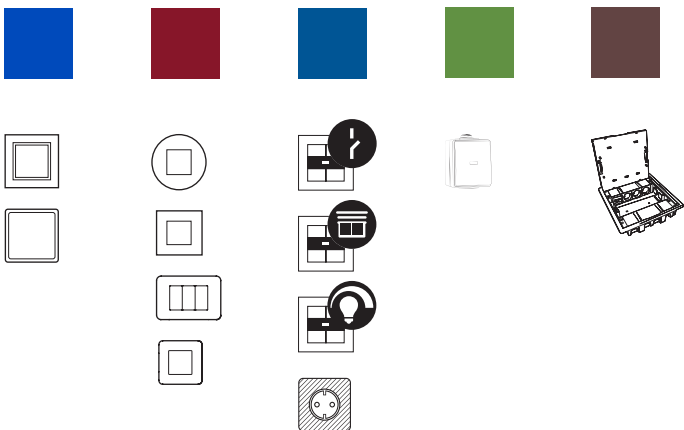
EFAPEL and BIM Tools

EFAPEL provides its digital library in BIM format, enabling effective collaboration between architects, engineers, and designers. Its series of built-in devices, such as **Logus90**, **Apolo5000**, **Siza**, **Quadra**, and **Latina**, as well as **Burotica** and **Waterproof48** solutions, are already integrated in this format.

With this integration in BIM, EFAPEL reinforces its commitment to innovation and sustainability in the construction sector.



add-in





Serpins,
3200-355 Serpins
Portugal

Portugal
+351 239 970 130
efapel@efapel.com

Export
+351 239 970 135
export@efapel.com

SAT Technical Support Service
+351 239 970 132
sat@efapel.com

efapel.com

